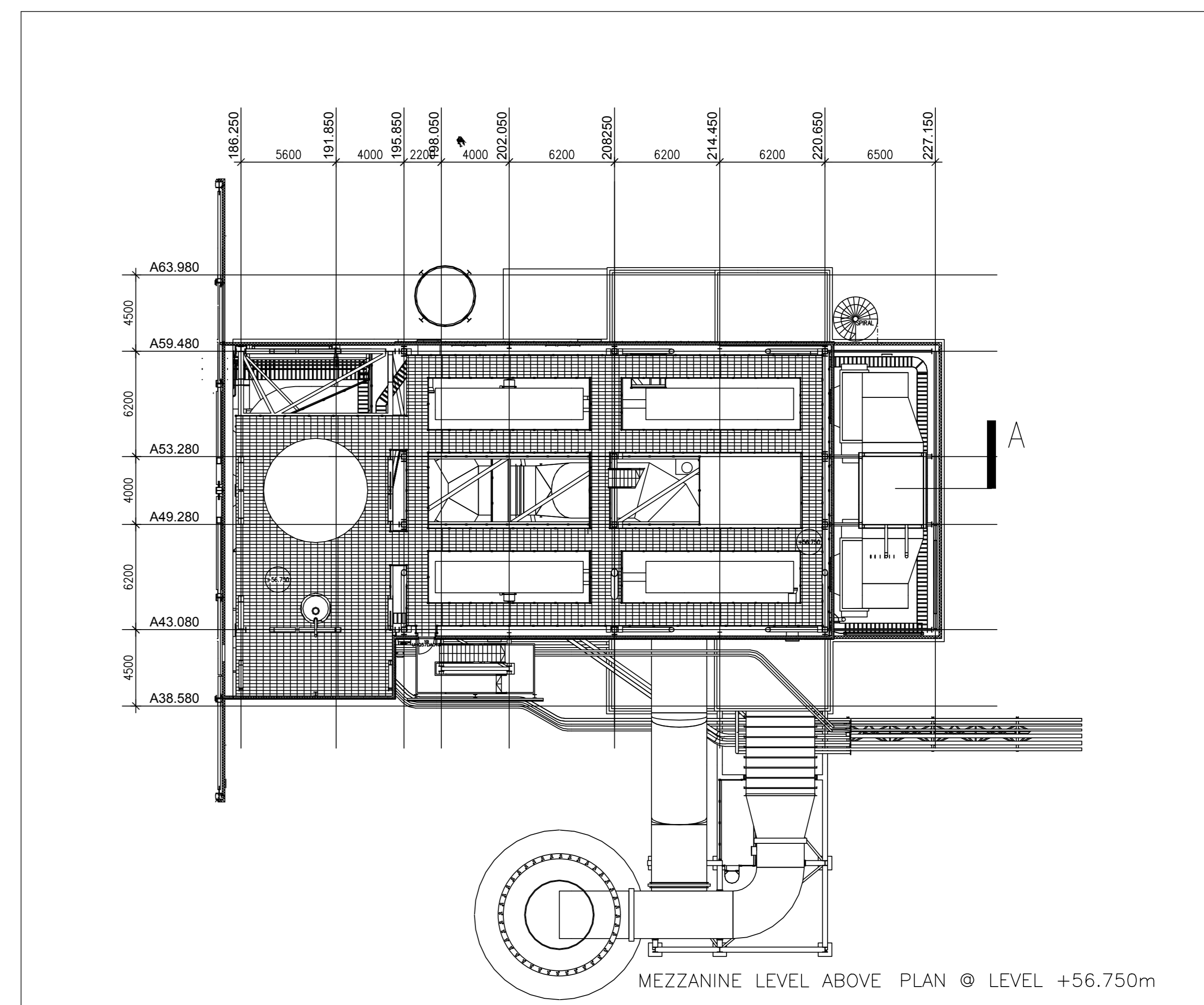


PLAN @ LEVEL +56.750m

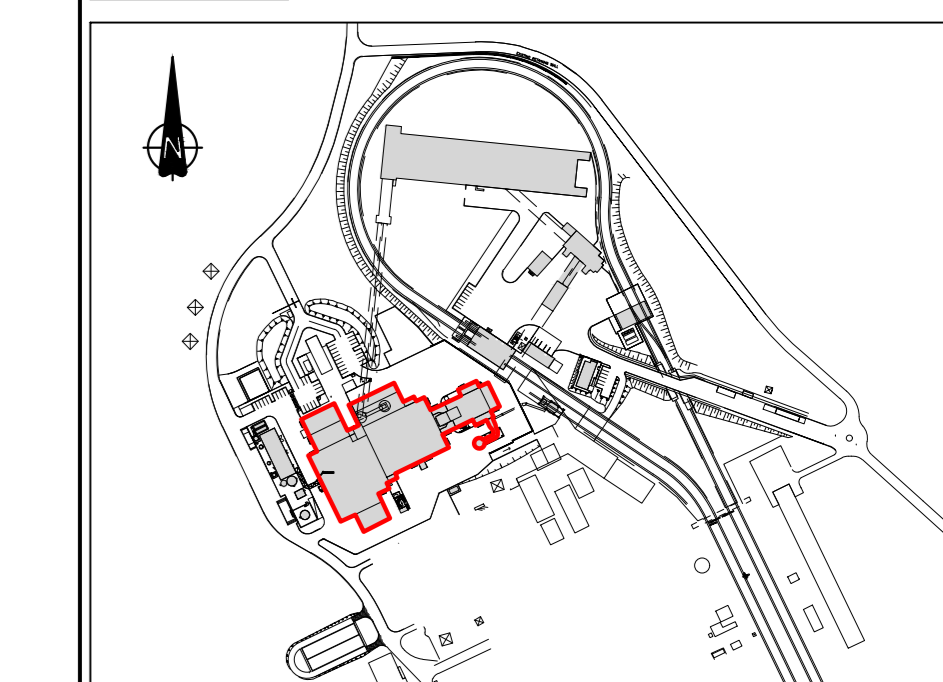


MEZZANINE LEVEL ABOVE PLAN @ LEVEL +56.750m

NOTE:  
 1. FOR SECTION A SEE DRG. QS-00206-01-D460-046  
 2. FOR SECTION B SEE DRG. QS-00206-01-D460-046

NOTE:  
 PLANS AND LAYOUT DRAWINGS SHOW PRINCIPLE FEATURES AND STRUCTURES OF THE SITE. AS WITH ALL INDUSTRIAL SITES, ON GOING OPERATIONS AND MAINTENANCE OCCASIONALLY NECESSITATE THE TEMPORARY USE OF MODULAR UNITS SUCH AS PORTACABINS FOR WELFARE FACILITIES, STORAGE ETC. THEIR USE IS TYPICALLY SHORT TERM, RELATED TO PARTICULAR ACTIVITIES AND DOES NOT CHANGE THE NATURE OR INTENSITY OF ACTIVITIES ON THE SITE.

KEY PLAN:



REV	DATE	DESCRIPTION	BY	CHK	APP	DRN	VER	APP
0	18.10.18	ISSUED FOR PLANNING						

0 18.10.18 ISSUED FOR PLANNING  
 REV DATE REVISION DESCRIPTION DRN VER APP DRN VER APP

ALL RIGHTS RESERVED. NO PART OF THIS WORK MAY BE REPRODUCED OR COPIED IN ANY FORM OR BY ANY MEANS, GRAPHIC, ELECTRONIC OR MECHANICAL, INCLUDING PHOTOCOPYING, RECORDING, TAPPING OR USED FOR ANY PURPOSE OTHER THAN ITS DESIGNATED PURPOSE, WITHOUT THE WRITTEN PERMISSION OF ESB ENGINEERING & FACILITY MANAGEMENT LTD. TRADING AS ESB INTERNATIONAL.

PURPOSE OF ISSUE - PRELIMINARY UNLESS INDICATED

CLIENT APPROVAL  PLANNING  TENDER  CONSTRUCTION  AS-BUILT

CLIENT ESB

PROJECT WEST OFFLY POWER TRANSITION TO BIOMASS

ENGINEER DESIGN BORDCUMONA Naturally Driven

CONTRACT WOP - TRANSITION TO BIOMASS

DRAWING TITLE EXISTING MAIN POWER STATION BUILDING PLAN AT LEVEL +56.750

PRODUCTION UNIT CIVIL & ENVIRONMENTAL ENGINEERING

ESB INTERNATIONAL One Dublin Airport Central, Dublin Airport, Cloughran, Co. Dublin

PRODUCED BY: HMG VERIFIED: HOK APPROVED: PK APPROVAL DATE: 18.10.18

CLIENT REF: 1 NO. OF SHEETS: 1 SIZE: A0 SCALE: 1:200

DRAWING NUMBER: QS-00206-01-D460-083 SHEET: REV